

# API

DEVELOPMENT  
CONSULTANTS INC.  
ARCHITECTURE & PLANNING INITIATIVES



Brampton, ON - 200 Steewell Road - Hilton Garden Inn & Home 2  
Construction Start - Summer 2016

Concept by: Saplys Architects Inc.





**Hilton Garden Inn & Hotel Complex - Toronto, Ontario**  
— Concept By: L. Saplys B. Arch., OAA



**WE COLLABORATE. WE COMMIT. WE CREATE.**



API DEVELOPMENT CONSULTANTS INC. was formed with the vision of becoming the Hospitality industry's leader in Planning, Development, Design of hotels throughout Canada.

The API team offers fully integrated project delivery and management services from concept to occupancy. The team members & their design process examines each project focusing on all aspects of site, building, landscape, interiors, budgeting & construction. A full service design approach to all projects, we guide our clients through the brand programs right up to the detailed construction process, including necessary municipal and associated agency approvals.

Our TEAM works with our clients to define the program & aesthetics desired for their project always ensuring the highest quality result for their development & construction dollar is maintained throughout the process.

## **TALENT**

## **ENTHUSIASM**

## **ADMINISTRATIVE SKILLS**

## **MANAGEMENT OF RESOURCES**

To simplify the process, we have broken it down into 4 main phases or tasks: Preliminary Schematic Design, Brand Development, Construction Documents and Project Management. The API TEAM and senior staff have over 100 years of combined experience in innovative design, planning & management of residential/mixed use, and hospitality developments. Whether it is assessing the real estate or production on the drawing board, (in the office or out in the field) our TEAM members are continuously involved with the projects at API.



## SERVICES

- ▮ Site Assessment & Planning
- ▮ Functional Programming
- ▮ Brand Assessment to Client Program
- ▮ Budget Analysis
- ▮ System Budgeting
- ▮ Building Code Consultation
- ▮ Schematic Design for Brand Approvals
- ▮ Design Development for Team Processing
- ▮ Construction Drawing & Specification Review
- ▮ Building Permit Coordination
- ▮ Project Management
- ▮ Project Financial Administration
- ▮ Contract Administration
- ▮ LEED Consulting (Sustainable Design)
- ▮ Construction Management
- ▮ Interior Design
- ▮ Architectural Renderings & Hand Sketches
- ▮ Marketing Drawings



Our **TEAM** provides a multi-talented and experienced foundation in the studio and on the construction site. Our modest sized firm of 23 talented team members offers our client's exceptional service and attention to detail. Each associate brings reliable expertise to the project and its development process with their comprehensive knowledge and a diverse and formulated approach.

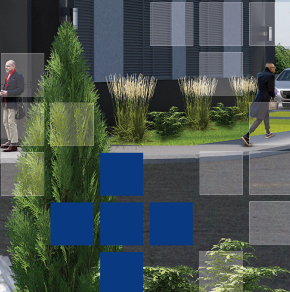
Edmonton Airport Master Site Plan - Edmonton, Alberta  
 —Concept By: L. Saplys B. Arch., AAA





Marriott Towne Place & Suites - Brantford, Ontario

— Concept By: L. Saplys B. Arch., OAA







Before



**Holiday Inn Express & Suites - Halifax, Nova Scotia**  
—Concept By: L. Saplys B. Arch., NSAA





Before



Delta by Marriott Hotels - Indianapolis, Indiana  
Concept By: L. Saplys B. Arch., NCARB





Memory Care Assisted Living - Burlington, Ontario  
—Concept By: L. Saplys B. Arch., OAA





Memory Care Assisted Living - Oakville, Ontario  
- Concept By: L. Saplys B. Arch., OAA





Lord Berri, Fairfiled Inn & Suites - Montreal, Québec  
— Concept By: L. Saplys B. Arch.





Before

Quality Inn Conversion to Marriott Courtyard - Oshawa, Ontario  
— Concept By: L. Saplys B. Arch., OAA





Before

Radisson Renovation to Hilton Double Tree - Toronto, Ontario  
— Concept By: L. Saplys B. Arch., OAA





Before

Super 8 Conversion to Sheraton Four Points - Vaughan, Ontario  
— Concept By: L. Saplys B. Arch., OAA



## COMPLETED PROJECTS IN 2015



Hampton Inn & Suites - Saskatoon, Alberta



Hampton Inn - Sarnia, Ontario



Home 2 by Hilton - Milton, Ontario



Holiday Inn Express - Oshawa, Ontario



Hampton Inn - Timmins, Ontario



Vitality MD Office - Toronto, Ontario



Marriott TownePlace & Suites - Kincardine, Ontario



Marriott Courtyard - Saskatoon, Alberta



# CAPITAL POINTE, REGINA, SK - CONDO RESIDENCE INTERIOR & EXTERIOR DESIGN RENDERINGS

—Concept By: L. Saplys B. Arch., OAA



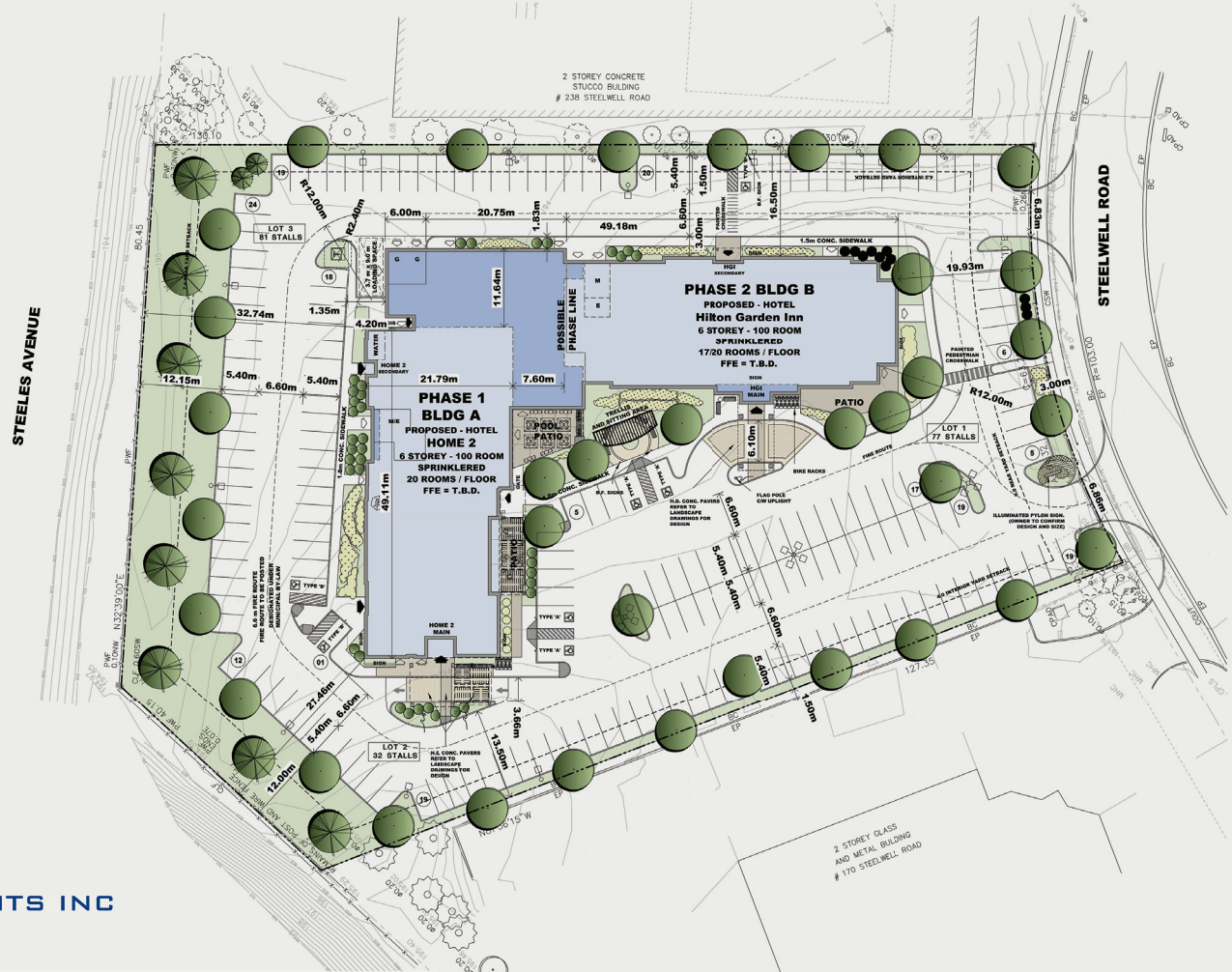




**API DEVELOPMENT CONSULTANTS INC**  
**ARCHITECTURE & PLANNING INITIATIVES**

1282 Cornwall Rd., Oakville, On, L6J 7W5

Tel. 905-337-7249



Visit us at [www.apidevelopmentconsultants.com](http://www.apidevelopmentconsultants.com)